

## COMPARING DIFFERENT TIME SIGNATURES

In this example, there are 3 beats in each measure. A 4 is on the bottom of the time signature, therefore a quarter note is worth 1 beat. The beats are written underneath the notes for you.

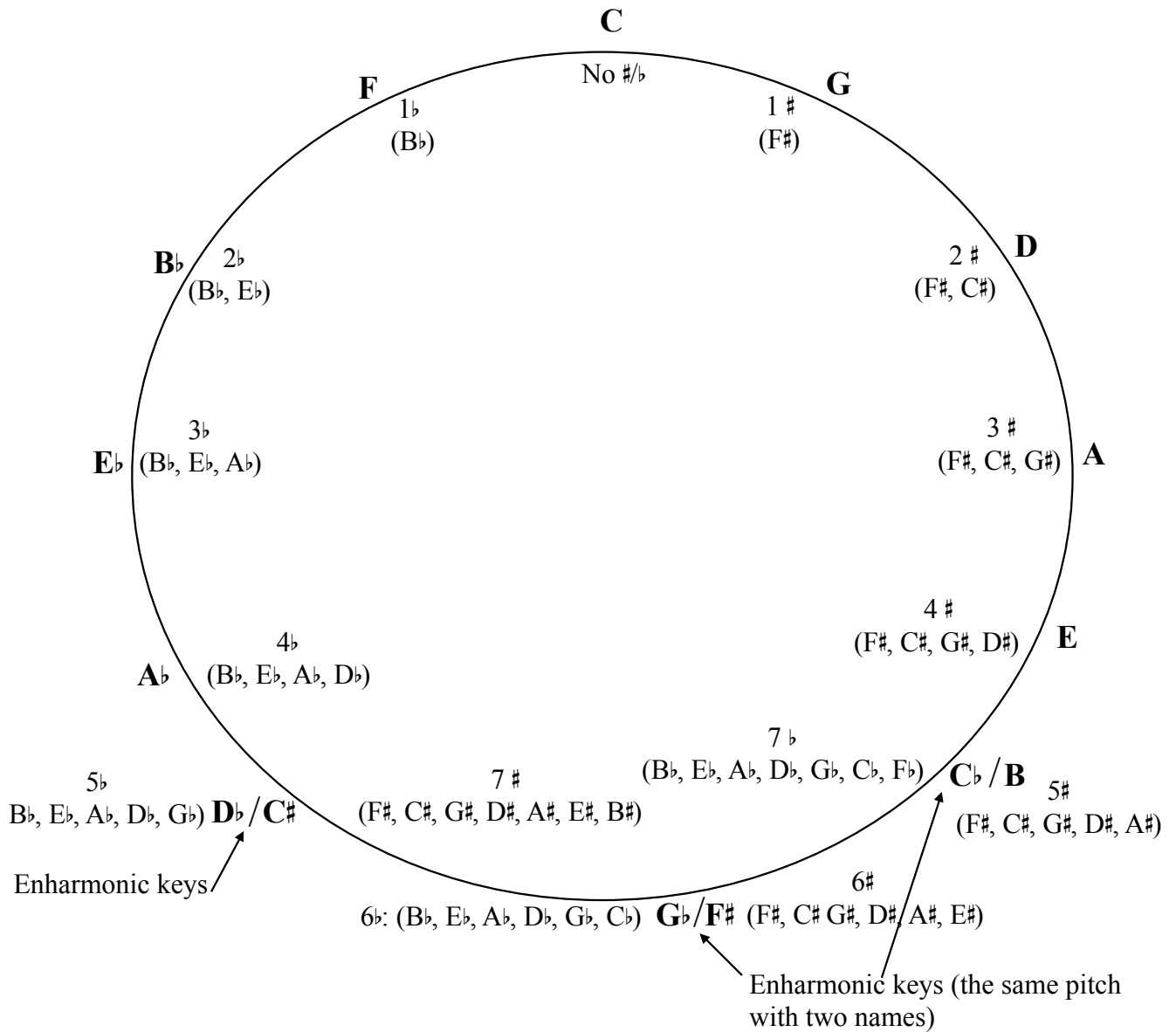
In this example, there are also 3 beats in each measure, but an 8th note is now worth 1 beat. The beats are written underneath the notes for you.

Here's a popular folk song in 6/8 time. When you sing this song, you can feel 2 strong beats in each measure, and it makes you want to sway side to side. You feel a strong beat on 1 and 4, which could look like **1 2 3 4 5 6**. The main difference between 3/4 and 6/8 is you will usually see two groups of three 8th notes in 6/8 time.

This song feels more like a walk, rather than a sway.

## CIRCLE OF FIFTHS

Another way to memorize the key signatures of the Major keys is to look at this Circle of Fifths (also known as the Circle of Keys).



# Beginning with the key of C (no #/b), when you go up a fifth (clockwise), you find the key that has one sharp (G). If you go up a fifth from G, you find the key with 2 sharps (D), and so on.

b Beginning with the key of C, when you go down a fifth (counter clockwise), you find the key that has one flat (F). If you go down a fifth from F, you find the key with 2 flats (B<sub>b</sub>), and so on.

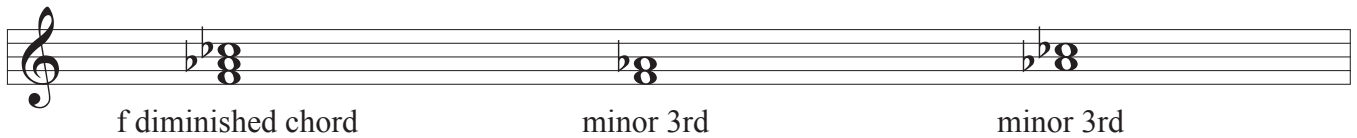


## Minor & diminished triads

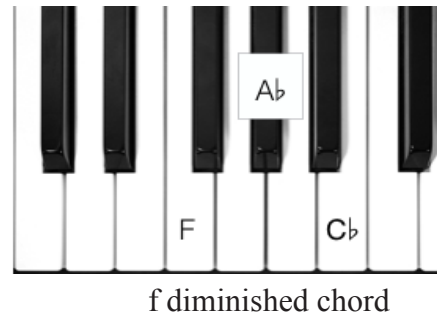
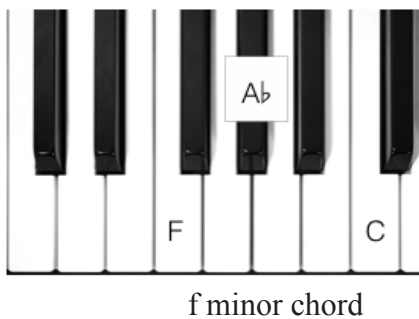
The **minor** triad consists of a minor third (3 half steps) between the bottom two notes and a Major third (4 half steps) between the middle and top notes.



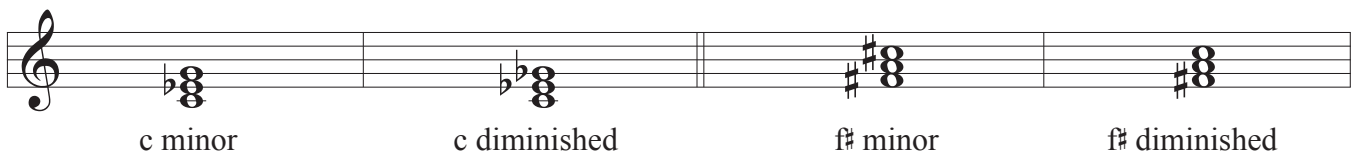
A **diminished** triad also has a minor third between the bottom and middle notes, but it has a minor third between the middle and top notes. To "diminish" means to make something smaller, and in this chord, the pitches are closer together (the intervals are smaller).



You can see the distance between the notes by looking at the keyboards below.  
The minor chord is F - A<sup>b</sup> - C and the diminished chord is F - A<sup>b</sup> - C<sup>b</sup>.



Here are some more examples of minor and diminished chords.



\*A double flat lowers a note by 2 half steps/a whole step (flattening a note twice).  
It is necessary in an E<sup>b</sup> diminished chord because the top note is a B<sup>b</sup>. In order to lower a B<sup>b</sup>, you must add a b<sup>b</sup>.

# Review: Lesson 6

1. Add an accidental to the top note of each Perfect interval to create the requested dim./Aug. interval.

dim. 5th   Aug. 4th   Aug. 4th   dim. 5th   Aug. 4th   dim. 5th   dim. 5th   Aug. 4th

2. Circle all of the diminished intervals. Remember to think of the Major key signature of the bottom note. If the top note has been lowered by either a flat, natural or double flat, then it's a diminished interval. The first one is done for you.

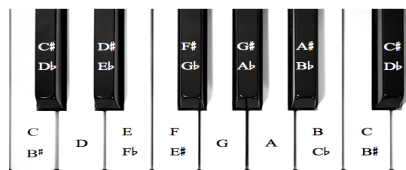
3. Circle all of the Augmented intervals. If the top note has been raised by either a sharp, natural or double sharp, then it's an Augmented interval.

4. Check the correct name for each interval. M=Major, m=minor, A=Augmented, d=diminished, P=Perfect. Use the keyboard below for help.

___ P4	___ P5	___ M6	___ P5	___ M6	___ M3
___ d4	___ d5	___ m7	___ d5	___ m6	___ m3
___ A4	___ A5	___ M7	___ A5	___ m7	___ A3

___ M2	___ P5	___ M7	___ P4	___ P8	___ P5
___ m2	___ d5	___ m7	___ d4	___ d8	___ d5
___ A2	___ A5	___ d7	___ A4	___ A8	___ A5

___ P4	___ M2	___ M3	___ P5	___ M7	___ M6
___ d4	___ m2	___ m3	___ d5	___ m7	___ m6
___ A4	___ A2	___ d3	___ A5	___ A7	___ P5



## Review: Lesson 9

1. Check the English word that contains the same sound as the given IPA symbol.

aʊ ___ Taught ___ Out	ð ___ Got ___ There	ʃ ___ Ship ___ Sound	oʊ ___ Boot ___ Boat	æ ___ Pat ___ Paint
ts ___ Cats ___ Tear	ŋ ___ Bring ___ Not	j ___ Young ___ Jet	ɔ ___ For ___ Out	ə ___ Feet ___ About
x ___ Hoch ___ Box	h ___ Hand ___ Hue	dʒ ___ Dare ___ Jet	ʌ ___ Vet ___ Cut	e ___ Late ___ Get
ç ___ Hum ___ Hear	ŋ ___ Never ___ Banyon	aɪ ___ Mice ___ Mate	ʊ ___ Look ___ Cut	ɪ ___ Mitt ___ Bite
u ___ Loose ___ Cut	o ___ Okay ___ Lot	ɑ ___ Fat ___ Bother	ɛ ___ Feed ___ Bet	i ___ Knee ___ Hit

2. Write a word in the blank provided that uses the given IPA sound. Don't use any of the words from above or on the previous pages!

aʊ _____	ð _____	ʃ _____
ts _____	ŋ _____	j _____
x _____	h _____	dʒ _____
ç _____	ŋ _____	aɪ _____
u _____	o _____	ɑ _____
oʊ _____	ʊ _____	ə _____
ɔ _____	ɛ _____	e _____
ʌ _____	æ _____	ɪ _____